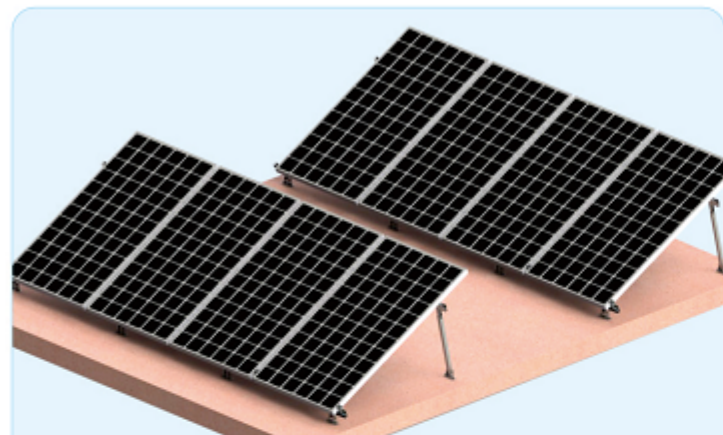




水泥地面可调节角度支架



本系统由以下零部件组成/This system consists of the following components:



产品说明/DESCRIPTION:

- 安装位置/Installation place: 水泥地面/Cement floor
- 斜面支架组件/Module slop: 根据实际需求/According to the practical demand
- 风力承载能力/Wind load: 40m/s、32.5kg/m²、13级
- 雪载承受力/Snow load: 70kg/m²
- 支架类型/Module type 框架/Frame
- 材料/Material: 铝型材/Aluminium profile
- 颜色/Colour: 本色/Natural
- 使用年限/Warranty time: 25 years.

ADVANTAGES:

1. 多样化应用/Diversified Application.
2. 通用的兼容性/Universal Compatibility.
3. 容易便捷安装/Easy and flexible Installation.
4. 可以大量安装太阳能组件/The quantity of the modules that could be installed is large.

工程实例照片



1 第一步/First step

With expansion bolt will be equipped with a tooth form a u-shaped base fixed on the cement floor, the diagram below: 用膨胀螺栓将配有齿形件的U型底座固定在水泥地面上, 如下图:



Figure 1(b)

2 第二步/Second step

The tooth part guide for M8*25 six hexagon bolt, flat washers, spring washers, slider nut, pay attention to the installation direction. The following diagram: 将导轨用M8*25的内六角螺栓、平垫、弹垫、滑块螺母固定在齿形件上, 注意安装的方向。如下图:

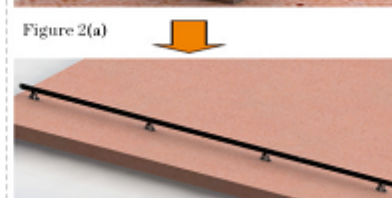
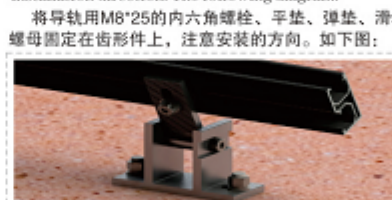


Figure 2(b)

3 第三步/Third step

And regulate the assembly good u-shaped base rod part by expansion bolt in the cement ground, the diagram below: 将装配好的U型底座及调节杆部份用膨胀螺栓固定在水泥地面上, 如下图:

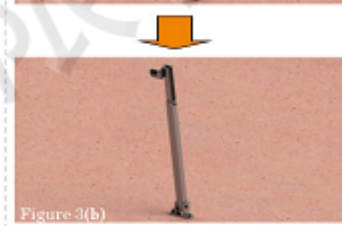
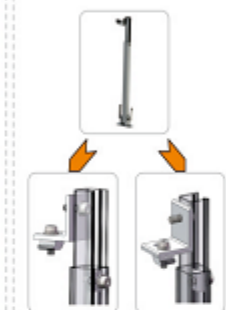


Figure 3(b) 备注: 前后排U型底座在同一条直线上。 Note: front and rear U type base on the same line.

注: 调节杆部份解析。 Note: the adjusting rod part analysis.

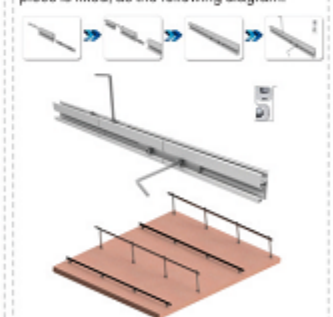


4 第四步/Fourth step

The guide rail with M8*25 inner six angle bolt, a plain cushion, an elastic cushion, slider nut is fixed on the L connections, pay attention to the installation direction. The following diagram: 将导轨用M8*25的内六角螺栓、平垫、弹垫、滑块螺母固定在L连接件上, 注意安装方向。如下图:



备注: 当阵列比较长时, 导轨与导轨之间用导轨连接件固定, 如下图: Note: when the array is rather long, guide rail and the guide rail between the connecting piece is fixed, as the following diagram:



5 第五步/Fifth step

Will form a side pressure, medium pressure block is fixed on the guide rail. The following diagram: 将组件用边压块、中压块固定在导轨上。如下图:

